

## **Historic, Archive Document**

Do not assume content reflects current scientific knowledge, policies, or practices.



72.61

RECORDED

1920



LIBRARY  
 RECEIVED  
 JUN 1 1931 ★  
 Department of Agriculture.

JUNE RASPBERRY  
 See Page 2

# W. P. Rupert & Son

Seneca, N. Y.



RUPERT HOMESTEAD 1819-1920



CUTHBERT RASPBERRY

## RASPBERRIES



PLUM FARMER

### THE THREE BIG ONES COLLECTION No. A

10 plants each of Cuthbert Red, Plum Farmer  
Black, Columbian Purple.

Less than half agent's prices.  
Our special price, 30 Splendid Plants only \$1.75.

Plant 2 to 4 feet apart. Prices, 2 for 25c.; 10 for 75c.; 100 for \$5.00; 1,000 for \$35.00; 50 at 100 rates 500 at 1,000 rates.

**Columbian.** This variety ranks at the top for amazing productiveness, vigor and the quality of its very large, dark red or purplish fruits. Perfectly hardy and grown largely for market, preserving and evaporating, retaining color, form and flavor remarkably.

**Plum Farmer.** The plants are hardy, vigorous and productive; the berries black, large, good in color and quality.

**Cuthbert.** This berry was misnamed. It should have been "Everybody's Berry," for it thrives everywhere and for everyone who plants it and gives it decent care. A red, large size, good quality, midseason berry. Strong grower and hardy as the Rock of Gibraltar.

**June.** Originated at the New York Experiment Station, and was selected as the best out of some thousands of seedlings. Ripens in June, considerably before any other standard red raspberry. The berry is large, bright red, firm in flesh, delicious in quality and is regularly producing larger yields than any other red variety.

The plant is of vigorous strong growth and has proved entirely hardy. Not to plant a few June is to make a great mistake. You may depend upon fruit next year if you plant a few this spring. 2 for 25c.; 10 for \$1.00; 100 for \$7.00.

Why not have an abundance of berries—why pay 30c per qt.? Why not pick them yourself?





## PRICES OF PEAR TREES

	Each	Per 10
5' to 7 ft., first class..	\$ .80	\$7.00
4' to 5 ft., first class..	.65	5.50
3' to 4 ft. whips.....	.50	4.50



BARTLETT PEAR

**Bartlett.** It is a valuable family Pear besides being very profitable. Bearing at an early age, and yielding increasing crops year after year, means highest prices and more money for you from the tree. The fruit is rich golden yellow when ripe, often with a soft blush; thin skinned, buttery and mellow, with a rich, musky flavor. A choice fruit for home as well as commercial canning. Cannors are eager to get this Pear and are always willing to pay good

prices for it. A good-sized, well-cared for Bartlett Pear orchard will make you independent.

**Clapp's Favorite.** A superb, large, long, yellow pear richly flushed with russet-red next the sun; juicy and delightful. The first market pear of value to ripen, and growers report, on account of its earliness, it often makes them more money than any other. A good profitable orchard variety. Six trees, eleven years planted yielded us \$117 worth of salable fruit. We planted 150 more Clapp's Favorite. August.

**Beurre de Anjou.** A large, greenish, handsome pear; flesh white, melting, excellent flavor. Productive. November to January.

**Kieffer.** A commercial variety of great value. So productive that to secure the largest bell shaped pears, the fruit should be thinned. Excellent for canning and to have a well cared for Kieffer is to have pears every year. October to December.

**Beurre Bosc.** A large fruit with a long slender neck tapering to a stem and is covered all over with a deep russet yellow. The quality is superb and by far the finest pear of its season. Not as good a grower in Nursery as some, and can offer only 4 ft. trees for sale at 75c. each, \$6.50 per 10. Season October.

**Seckel.** The well known small sweet dessert pear. High quality. We offer one year trees only about 3 ft. at 40c. each.

**Sheldon.** Good sized yellow russet pear. Skin tough, flesh a little coarse but juicy and a most delightful flavor.

**Duchess.** Very large green pear of good average quality. Valuable for market. Very successful as a dwarf.



Why not have an abundance of berries—why pay 30c per qt.? Why not pick them yourself?



ROCHESTER

## PEACHES

Peach trees are in very short supply and we are able to furnish only moderate quantities of these varieties.

### PRICES OF PEACH TREES

	Each	Per 10	Per 100
Large size, 4 ft., XXX .....	\$ .75	\$6.50	\$60.00
Medium size, 3 to 4 ft., XX .....	.65	6.00	50.00
Bargain size, 2½ to 3 ft. ....	.50	4.00	35.00

**Rochester.** A peach that is winning favor with every one who has tried it and is commended very highly for its productiveness, its great beauty, its hardiness and very superior flavor. Truly it is a wonderful combination of splendid qualities in so early a peach. While cutting peach buds for propagating, the writer had the pleasure of visiting a six acre orchard of Rochester. That August day the orchard was a beautiful sight, so loaded down with very highly colored choice fruit. Large yellow and red freestone peach of high quality. One tree the next year after planting bore seventeen peaches. In a different orchard one bore twenty-seven peaches. Rochester trees have stood 16 degrees below zero and yielded a crop. Ripens considerably in advance of Early Crawford.

## GARDEN PEACH COLLECTION No. B

One more chance to secure a selection of very choice peaches for your fruit garden for little money. These varieties are especially adapted for home use. Quality is most excellent and the ripening extends over a long season. Each variety produces most abundantly.

**THREE FINE TREES FOR ONLY \$1.75**

One tree each of these three kinds, Rochester, Belle of Georgia and Elberta

**THREE TREES AT 25 PERCENT DISCOUNT**

"I have bought a lot of trees and shrubs from you, and they always come in the best shape. Well packed and protected."  
 W. W. Burnham, Brattleboro, Vt.





HALE PEACH

**Hale.** This peach has come to stay, and is taking a prominent place among the real peaches to be grown for market and for the home. The introducers and growers who have tried out this new peach write "the biggest ever,—the greatest yielder." Size one-third to one-half larger than Elberta. Weighs twelve per cent more to the bushel. Rich, deep golden yellow, with carmine blush. Flesh solid, meaty, yet a perfect freestone; flavor luscious, superior to Elberta, dripping with rich, sweet juice. Best shipper known. Wonderful keeper. Ripens trifle ahead of Elberta. Hardier in wood and bud than Elberta; late bloomer. Has brought 30 per cent to 50 per cent more than finest grown Elbertas in every market offered. Over \$1400 per acre from one orchard. We could fill the entire page with similar statements taken from the introducer's advertising.

**Carmen.** A most popular and profitable early peach and very largely planted in commercial orchards. Trees three years planted may be depended upon for a crop. At 5 years planted orchards have averaged \$13 worth per tree. Creamy yellow, with deep blush; flesh white, juicy, tender, excellent. Hardy in bud. Freestone when ripe. August 15.

**Elberta.** The leading market variety; thrives and produces well in all sections. Fruit large, handsome, bright yellow overspread with crimson; juicy, good and firm. Can be gathered while hard and will ripen without rotting. One-third of all the peaches we grow are Elberta, yet we always sell out on Elberta first. This shows its great

popularity. Immediately follows Early Crawford. September 15–22.

**Belle of Georgia.** No variety today, we believe is gaining friends among commercial growers as fast as Belle of Georgia. If you are not acquainted with this white fleshed sister of the Elberta, delay no longer. The trees are not as susceptible to an attack of leaf curl, and are extremely productive. Magnificent large creamy white fruit, one side being nearly covered with brilliant red. A perfect freestone. A rich, sugary sweetness that makes it one of the most delicious peaches grown. Belle gave us a crop last year, the severe winter killed others. September 10.

### CURRANTS, GOOSEBERRIES, GRAPES

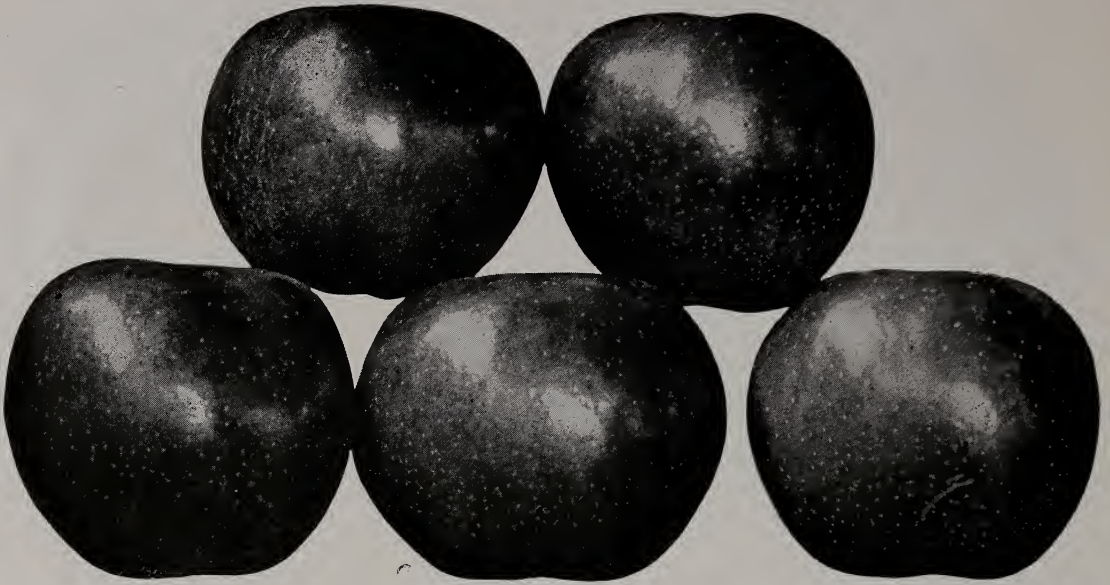
On the above kinds of small fruits our supply is exhausted. While we could purchase a limited quantity on the wholesale market, the price is so high as to be nearly prohibitive.

We anticipate next season's prices on these plants will be more reasonable.

---

"The shipment came in fine shape; seemed to be good stock. Thanks."

E. E. Scranton, Hamilton, N. Y.



BALDWIN

## APPLES

Our supply of apples is very restricted this season but every variety we have is a good one, and covers the season reasonably well.

### PRICES

	Each	Per 10
5 to 6 ft., XXX size.....	\$ .80	\$7.00
4 to 5 ft., XX size.....	.70	6.50
3 to 4 ft.....	.50	4.00

Ripening season marked, S—Summer; F—Fall; W—Winter.

**Baldwin**—W. The best known standard red winter apple, and the leading commercial apple in the Eastern and Central states. Good quality, enormously productive.

**McIntosh**—F & W. No apple has had so persistent a demand as this. A standard in high quality, a heavy producer, similar in quality to Fameuse (Snow) but larger. Bright deep red, covered with purplish bloom; flesh white, crisp. A delightful apple.

**Northern Spy**—W. Large, roundish, slightly conical, dark crimson on sunny side. Flesh white, juicy, high flavored.

**Fall Pippin**—Long yellow, crisp, tender flesh, rich and delicious. Valuable for market and a splendid baking apple. Only the XXX size offered.

**Gravenstein**—F. Red striped, juicy, high quality apple that ripens in August and September. Especially desirable for home use. Very productive and sells well in market. Sprightly sub-acid. Only XXX size offered.

**Delicious**. Seems to be gaining popularity in the East. Worthy of a trial and a tree in your home assortment will be appreciated. Large as grown in the West, medium size in New York. Color red, oblong and conical. Excellent quality.

**R. I. Greening**—W. The standard green apple and more largely grown in New York state than any other variety, except Baldwin. Should be included in every orchard and home collection. Immensely productive. December to March.

**Winter Banana**—W. A delightful eating apple, and very productive. Large, clear, pale yellow with a Turkish red blush. Very attractive and characteristic aromatic flavor. Don't omit this variety from your selection.

**Yellow Transparent**—S. The first to ripen, immensely productive, and so precocious in bearing that it often starts the second year after planting. Pale yellow, flesh tender, juicy, sub-acid. Excellent for cooking and good to eat out of hand.

"Trees received in good condition, larger than I expected from description."

F. L. Whelpley, Onoville, N. Y.

# ASPARAGUS

Asparagus is known as our longest lived vegetable. A bed of one hundred plants is all that is necessary for the average family, and will supply hundreds of his healthgiving vegetable.

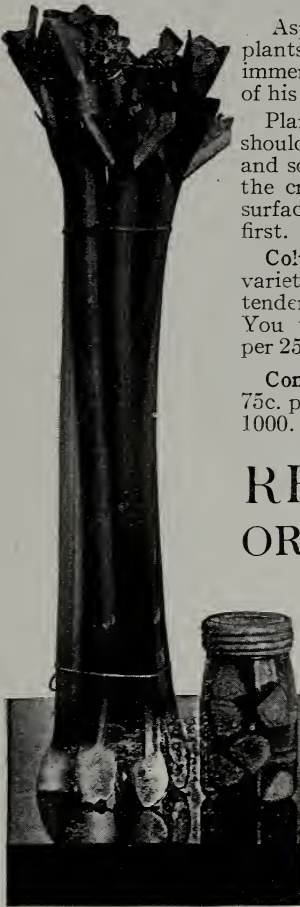
Plant in the spring; the roots should be spread out, well firmed, and soil placed about them, setting the crowns three inches below the surface. Do not cover too deeply a first.

**Columbia Mammoth.** A distinct variety, producing very large, white, tender shoots of superior quality. You will prize this variety. 75c. per 25; \$2.00 per 100; \$10 per 1000.

**Conover's.** Large green shoots. 75c. per 25; \$2 per 100; \$10.00 per 1000.

# RHUBARB OR PIEPLANT

You should have a row of Rhubarb, or Pie Plant in your garden. Ten or twenty plants are enough for any family. Prepare the bed or the hill for each plant, to a depth of two feet if possible, working in much compost or well rotted manure. There is nothing more healthful than Rhubarb sauce and delightful pies made with fresh cut Rhubarb. Prices of strong roots lower than ever. Only 15c. each; \$1.25 per 10; \$10.00 per 100.



COLUMBIAN MAMMOTH ASPARAGUS

# CHERRIES

The Cherry tree requires dry soil. The Sour Cherries form smaller trees, and as a rule are a trifle more hardy.

	Each	Per 10
4 to 5 ft. trees .....	\$ .75	\$7.00
3 to 4 ft. trees .....	.60	5.00

**Montmorency.** A large, red, acid cherry, very profitable; more largely planted for market and preserving companies than any other. The tree is hardy, of vigorous growth, and exceedingly productive. This is one of the most valuable and popular of the sour cherries and is unsurpassed for cooking purposes. Often fruits next year after planting. June.

**Windsor.** A very large dark red sweet cherry that is almost black when fully ripe. The season is a few days later than the very earliest sorts, but in these few days the delightful flavor and substance that give firmness and character to the flesh of the fruit is gathered and concentrated in the fruit itself. Fruit hangs well on the tree and with us seems less inclined to rot than most varieties. Tree vigorous, hardy, and comes in to bearing at an early age. We recommend this as a profitable and satisfactory sweet cherry.



MONTMORENCY

"Except thanks for good bailing and quality."

F. L. Whelpley, Onoville, N. Y.

# PLUMS AND PRUNES



**BURBANK**  
Reduced to one-third size

Of all fruit trees possibly Plums are the scarcest this year. We are very fortunate in having a fair assortment, and are able to supply the following very desirable varieties, in moderate quantities. We suggest you try Collection C if you want a few for family use. While the trees are small, they are vigorous and will give excellent results.

### PRICES OF PLUM TREES

	Each	Per 10
5 to 6 ft.....	\$.85	\$7.50
4 to 5 ft.....	.70	6.00
3 to 4 ft.....	.65	5.50

**Abundance.** An early Japanese plum, very productive of large cherry red fruits. Flesh light yellow, very juicy, tender and sweet. A very satisfactory plum for family use, and should be included in every assortment.

**Burbank.** An exceeding vigorous and hardy tree that yields enormous crops of a good medium size, or if thinned very large fruits of a very superior quality. The plum is nearly round, a bright deep or brilliant red, flesh a deep yellow, very sweet, meaty and quite firm, keeping and shipping finely. We have never known these trees to be hurt in the orchard by winter.

**Climax.** If you want the earliest good plum, order this one. It should have been called surprise, for it will astonish you that so early a plum can be as large as these usually grow. A heart shaped red fruit, full of juice and delicious to eat out of hand.

**Bradshaw.** Very large, dark violet red, with a blue bloom. Flesh yellow, juicy and good. Very productive. A good seller and a variety you do not want to miss.

**German Prune.** One of the best standard prunes. Valuable for drying, preserving or marketing. We have them only in 4 ft. size.

**Lombard.** Medium to large; dark red, often green in the shade. The tree is vigorous and will succeed reasonably well even under adverse circumstances; it pays well to thin the fruit. Very hardy. To have Lombard is to have lots of plums every year.

**Reine Claude.** Skin yellow; flesh yellow, juicy and melting. The best of the Green Gages. 4 to 5 ft. trees only.



**BRADSHAW**

"Tree came in good shape and are best looking trees I've seen in a long while."

O. O'Hanlon, Elmira, N. Y.

**Satsuma.** A hardy, productive plum, with dark red skin and flesh, juicy and pleasant to eat, and still more delicious when preserved. Fruits are about two inches in diameter, and are handsome in appearance. Valuable for market and especially prized by those who have it in their gardens. More

people send us samples of this variety to find out its name, than any other. 4 ft. trees only.

**Wickson.** Large glowing carmine fruit, flesh firm, sugary and delicious; pit small. Tree blossoms freely in nursery row at one and two years old. Fruit on account of size and beauty sells readily at high prices. 4 ft. trees only.

## SPECIAL PLUM COLLECTION Number C

We have quite a few vigorous young plum trees, and we have decided to give you an opportunity to secure three trees at a reduced rate. Every garden should have at least three choice varieties and we will give you a choice of three trees, to be picked one of a variety from these five varieties. Abundance, Burbank Climax, Bradshaw, Satsuma. Make your own selection. Regular price \$2.10.

Special price **THREE TREES FOR \$1.75**

## QUINCES

For preserves, jellies, etc., there is no finer fruit. Tree needs but little room and bears annually.

**Orange (Apple).** The well known popular Quince; golden yellow with firm flesh and good flavor; one of the best for cooking. The best of the older varieties, and still more extensively planted than any other. 75c. each, \$7.00 per 10.

## BLACKBERRIES

**Snyder.** How delightful to have an abundance of these large long delicious berries. To have a supply to use fresh or in a pie is a joy indeed. One's mouth fairly waters for them. Blackberry plants are very scarce indeed, but we are able to offer a few of this very hardy standard sort. Large yielders of fine quality berries. Easily grown; no one need fail with this variety. Prices 2 plants for 25c., 10 for \$1.00. 50 for \$3.00.



## Evergreens and Hedges

**Juniper, Irish.** Erect, forming a pillar of deep green foliage. 50 cts. each.



BARBERRY THUNBERGII

**Privet, California.** It makes a very thick hedge right from the bottom, sending up many strong shoots. The leaves are a rich green, and remain on the plants up to Christmas. Set 1 foot apart. 24 in., 10 cts. each; \$5.50 per 100.

**Barberry, Thunbergii.** Without question the most desirable ornamental hedge. A graceful shrub of dense low-growing habit. Leaves bright green, assuming in autumn dazzling shades of orange and crimson. A host of brilliant red berries hang throughout the winter. Untrimmed instead of becoming high and unsightly, it spreads out, making a wide but graceful, dense hedge. Quail and pheasants are fond of the berries and will use clumps as a harbor. Suitable for hedges and also as an individual shrub. Stands severe annual trimming perfectly. 25c. each, nice hedge size, plant 15 inches apart. \$10.00 per 100.

Why not have an abundance of berries—why pay 30c per qt.? Why not pick them yourself?

## ORNAMENTAL TREES

Trees wisely selected and planted make pleasant surroundings. A barren, forlorn place may be changed almost in the twinkling of an eye to a restful and satisfying home by use of a few nice trees. The following varieties will please.

### Our Collection F

Will you spend just two dollars on your lawn? If so we have this Shade Tree Collection, No. F, for you. Three fine trees for your lawn.

2 Norway Maple. Regular price, \$2.00.

1 Catalpa Speciosa. Regular price, 75c.

**\$2.75 for only \$2.00**

**Birch, Cut-leaved Weeping.** Silvery white bark, drooping branches and delicately cut foliage. 5 to 6 ft., \$1.50.

**Beech, Purple.** Foliage is deep purple, later it changes to crimson, and again in the fall, to a dull, purplish green. 4 ft., 75c.

**Catalpa, Bungeii.** It forms a round, dense head and is especially attractive grafted head-high on a straight stem. \$2.00.

**Catalpa Speciosa.** Large, fragrant clusters of flowers in July; extra large, heart-shaped leaves; very rapid in growth. 6 ft., 75c. each.



### CAROLINA POPLAR

**Linden, American.** A rapid growing, beautiful tree; large leaves; fragrant flowers. 4 to 5 ft., 50c.

**Poplar, Lombardy.** Grows rapidly to extravagant height, if unpruned. Largely used for a background or screen. Can be kept at any desired height by judicious pruning, and for a dense screen should be set about 3 ft. apart. 50c. each; \$3.50 per 10.

**Poplar Carolina.** The most rapid in growth of any shade tree, often growing 6 to 8 feet in a season. Thrives in any soil, makes a fine screen to hide unpleasant views. 50c. each, \$4.00 per 10.

**Maple, Ash-leaved.** Very rapid growth. Narrow, pinnate leaves. Light green bark. 50c.

**Maple, Norway.** Most popular species of the Maple group, either for lawn or street planting. Foliage is deep green, and the individual leaves are large. The stout, vigorous growth, the compact head, and freedom from disease and insects makes it a general favorite. Norway Maples are in greater demand than any other variety. 6 to 8 ft., 75c.; 8 to 10 ft., \$1.00.

**Mulberry, Russian.** The fruit furnishes the birds a bountiful supply, and more valuable fruits are left alone. Don't fail to have a tree for this very purpose. 5 ft., 40c.

### NUT BEARING TREES

**Chestnut, Japan.** Very large nuts. We find them very productive, and ready sale at 20c. a quart. Quality delicious when boiled or roasted. 75c.

**Chestnut, American.** Our native sweet Chestnut. 75c.

**Walnut, English.** Becomes hardy with age, and bears freely. The English Walnuts of commerce. 2 ft., 50c.



NORWAY MAPLE

"Received trees and shrubs in fine shape. Thank you for prompt shipment."

G. H. Benson, So. Lansing, N. Y.



SPIREA VAN HOUTTEI

This photograph was taken less than 14 months after this planting was made about the porch.

## Ornamental Shrubs, Vines

The judicious planting of shrubs adds greatly to the beauty and value of the home. A good arrangement of shrubs invariably provides wide open stretches near the center of the lawn.

We have omitted several varieties, concerning which we will be glad to correspond.

### SHRUBS

**Rose of Sharon (Althea).** Who fails to admire these beautiful late blooming shrubs. They are like the "last rose of Summer." Very effective singly or in groups. 50c.

**Deutzia, Crenata.** A hardy, vigorous shrub that does not suffer from insects or diseases, and early in the season is fairly covered with very showy, double bell-shaped white flowers that on the edges are ringed with rose. Handsome and desirable. 50c.

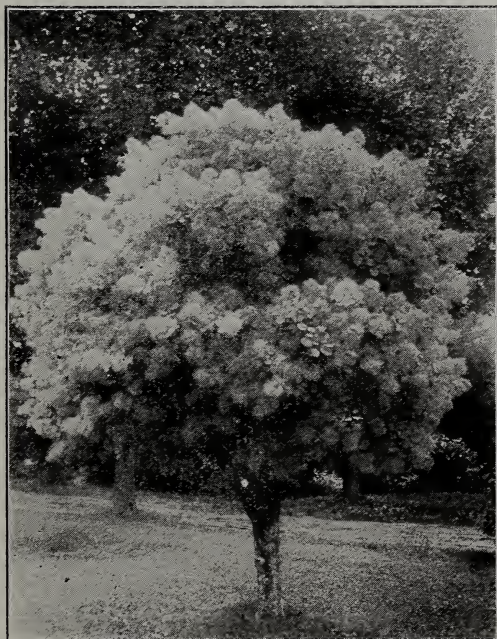
**Fringe (Smoke Tree), Purple.** Curious fringe of hair-like flowers completely cover the bush in mid-summer. 50c.

**Forysthia.** Beautiful yellow flowers before the leaves. A most beautiful shrub. 50c.

**Honeysuckle, Red Tartarian.** Fragrant pink flowers in May, and beautiful orange colored berries. 50c.

**Lilac, Vulgaris.** Old-fashioned Lilac. 50c.

**Lilac, White.** Pure white, fragrant flowers. 50c.



PURPLE FRINGE



WEIGELA ROSEA

**Spirea, Van Houtte.** The grandest of all the Spireas. It is a beautiful ornament for the lawn at any season, but when in flower it is a complete fountain of white bloom, the foliage hardly showing. Clusters of twenty to thirty white florets make up the raceme, and these clusters are set along the drooping stems. Perfectly hardy and early bloomer. The very finest shrub for a hedge, or for planting about a porch. 50c. each, 3 for \$1.25.

**Spirea, Billardi.** During July every branch is tipped with a spike of beautiful, blood-red flowers, 4 to 6 inches in length. 50 cts.; 3 for \$1.25.

**Spirea, Anthony Waterer.** A beautiful dwarf shrub continuously yielding an abundance of rich crimson flowers. 50c.

**Syringa, Mock Orange.** A wealth of creamy white blossoms, yielding the fragrance of the orange blossom. Very desirable for cut-flowers. 50 cts.

"Received plants and shrubs in good condition. Well pleased." Charles Barrand, Mt. Sinai, N. Y.



SYRINGA, MOCK ORANGE

**Hydrangea, Paniculata Grandiflora.** Absolutely hardy, thrives in all soils. Begins to bloom early in August, and continues for several weeks. It is conceded to be one of the finest shrubs cultivated. Valuable for planting singly or massing in beds. We heartily recommend it to all lovers of flowers. Ten arranged in a five-foot bed make a very handsome and suitable lawn or cemetery decoration. Requires annual and severe pruning to secure best results. 50c; 4 for \$1.50.

**Weigelia, Rosea.** One more old favorite and the best Weigelia. A heavier bloomer does not exist. Vigorous in growth, hardy, and at blooming time, literally covered with rose-colored, bell-shaped flowers. 50c.

**Snowball.** An old favorite. Covered with profusion of balls of flowers white as snow. 50c.

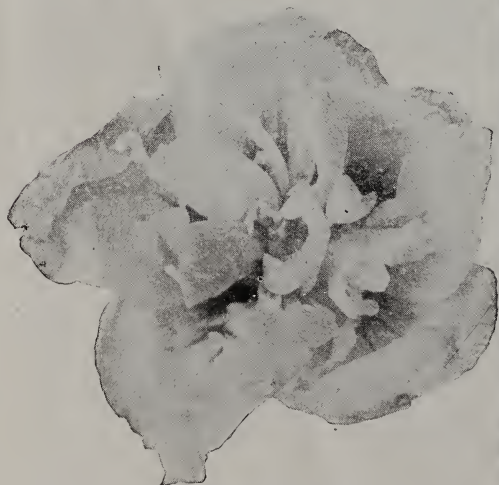


DEUTZIA

## SHRUB COLLECTION No. E

A little clump of shrubbery would set off your lawn beautifully. Why not decorate a little? It won't cost much. It will take care of itself, and it will be a joy forever to you and your family. The beautiful **Bushform Hydrangea**; the **Honeysuckle Upright**, with its abundance of beautifully tinted flowers in early summer; **Weigelia**, much admired for its beautiful flowers borne during mid-summer; **Snowball**, that is covered with large white flowers in June;

We offer these four varieties in nice size plants for only \$1.50.



ALTHEA (Rose of Sharon)



HYDRANGAEA PANICULATA GRANDIFLORA



## VINES

**Ampelopsis Veitchii, Boston Ivy.** Clings firmly to the smoothest wall. Leaves change to bright crimson. Thrives best out of the sun. 75c.

**Clematis, Jackmani.** Flowers are large, intense violet-purple. Blossom in midsummer. 75c.

**Clematis, Paniculata.** Fancy, if you can, a Clematis after it has become established, starting from the ground and in one season covering from end to end a good-sized porch so completely with small white flowers that you cannot see the green leaves. Very popular on account of these wonderful masses of pure white, fragrant flowers. 65c.

**Honeysuckle, Hall's Japan.** An almost ever-green variety, with pure white flowers, changing to yellow. Very fragrant and a vigorous grower. Blooms from June to November. A better general purpose vine does not exist. 60c.

**Wisteria, Chinese Purple.** A most magnificent climbing vine, growing at the rate of 15 to 20 feet

in a season. Bears long clusters of beautiful, pale blue flowers during the summer. 75c.

**Dutchman's Pipe.** Very large, heart-shaped leaves; curious yellowish brown flowers similar to a Dutch pipe. Splendid for archways and porches. \$1.00.



CHINESE PURPLE WISTERIA

### VINE COLLECTION, No. D—\$2.50

You cannot fail making your porch the envy of your neighbors and a bower of beauty with these five hardy vines that bloom all summer, and which you can buy at about half price:

1 Paniculata Clematis .....	\$ .65
1 Honeysuckle, Hall's .....	.60
1 Wisteria, Purple .....	.75
1 Clematis, Jackmani .....	.75
1 Ampelopsis, Veitchii .....	.75

3.50

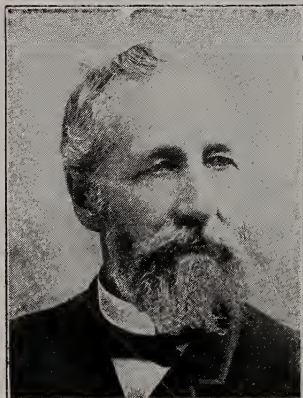
ONLY \$2.50. Just one-quarter the price a tree agent would ask you. Sent by Parcel Post if desired. No extra charge for packing.



CLEMATIS PANICULATA

# WE OFFER 7 PER CENT CASH DISCOUNT

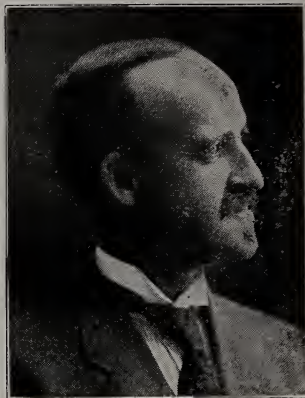
From these prices if you mail your order within eight days after you receive this Bulletin. Or mail your order any time within fifteen days and you may add free to your order extra trees or plants amounting to ten per cent of the order. We will pay freight and express charges on all cash orders received at these prices before April 1st. If you want us to pay the freight or express on your order at prices named herein, you must send it before April 1st.



W. P. RUPERT

**F**IFTY-THREE years the Rupert's have been growing and selling tree on the farm that was purchased one hundred years ago last April. The fourth generation is now occupying the old home and its broad acres, and the constant aim has been toward improvement. Over 4,000 trees in orchards. A Holstein dairy herd, a flock of Hampshire sheep, the usual additional live stock, and a station for threshing green peas for a preserving company, represents some of our activities. Our desire has always been to treat our customers on the square.

**IF THIS APPEALS TO YOU,  
WE ASK FOR YOUR TRADE**



F. E. RUPERT

The shortage of trees and plants is much more serious this year. than last and many varieties are not obtainable. We have a moderate supply of the varieties offered, but advise early orders as all offers herein are subject to the stock being unsold on receipt of definite orders.

The present shortage of trees will continue for some years at least. Until France is again able to supply the foundation seedlings as formerly on which to grow trees, and labor conditions are more nearly normal, we can see no relief.

The outlook for profit in fruit never has been as favorable as now. Decreased plantings, injury by cold weather and increased demand for the products of fruits will inevitably result in high prices.



## Progressive, Fall Bearing Strawberries

This seems to be the best of all the Fall Bearers. Medium sized berries, plants of vigorous growth and very productive, often bearing fruit same year planted. One hundred and fifty blossoms green and ripe fruit have been counted on a single plant. To get a large crop during the latter part of summer and fall, the blossoms should be picked off until about July 1st, then pick fruit until freezing weather.

Twenty-five plants for \$1.00, 50 for \$1.75, 100 for \$2.75. POSTPAID.